



31.05.2021
>
31.07.2021
|
EXHIBITION

"MAILART.PT" #002

Fórum de Arte e Cultura de Espinho, Portugal

*collective international mail_art and derivatives
exhibition*

https://instagram.com/explore/tags/yonk_mailart/
www.mailart.pt
www.thejonfoster.blogspot.com
www.facebook.com/jon.foster.39904
www.mailmesomethingart.blogspot.com



ABOUT

"MAILART.PT" is an online platform for international mail_art & art_by_mail promotion and archive. Sharing the same name, "MAILART.PT" is also an international exhibition of mail_art and its derivatives curated by Monsenhor enVide neFelibata. This show is renewed on the 31st of each month and has presents a selection of the most representative works of its genre and of famous artists. The objective of this project is to promote and elucidate the public about this art form through a strong pedagogical focus.

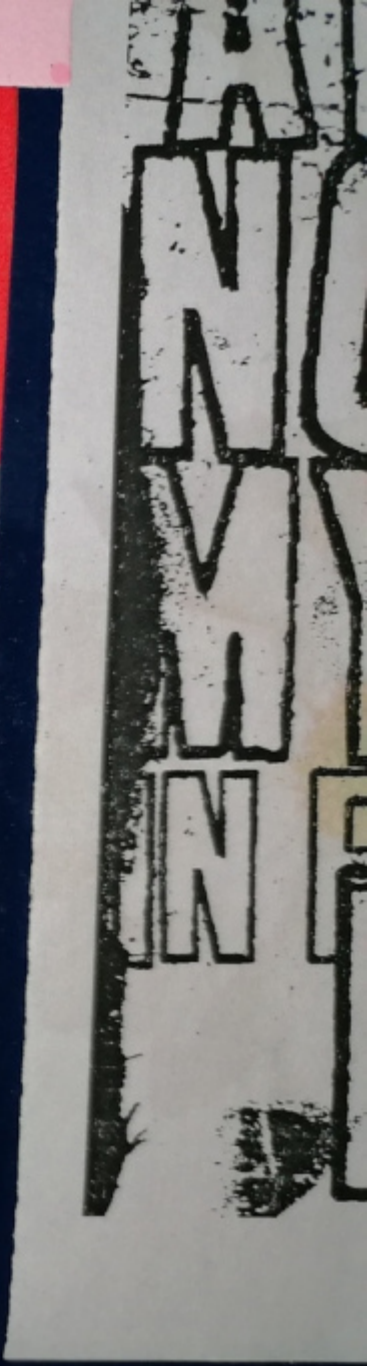
The artwork rotation allows revisiting and creating renewed collections confronting artists and times. This collection is also kept up to date in digital format on the www.mailart.pt platform and aims to become an object of study of the evolution of new artistic languages by these authors and their artistic careers, within the genre that is mail_art.

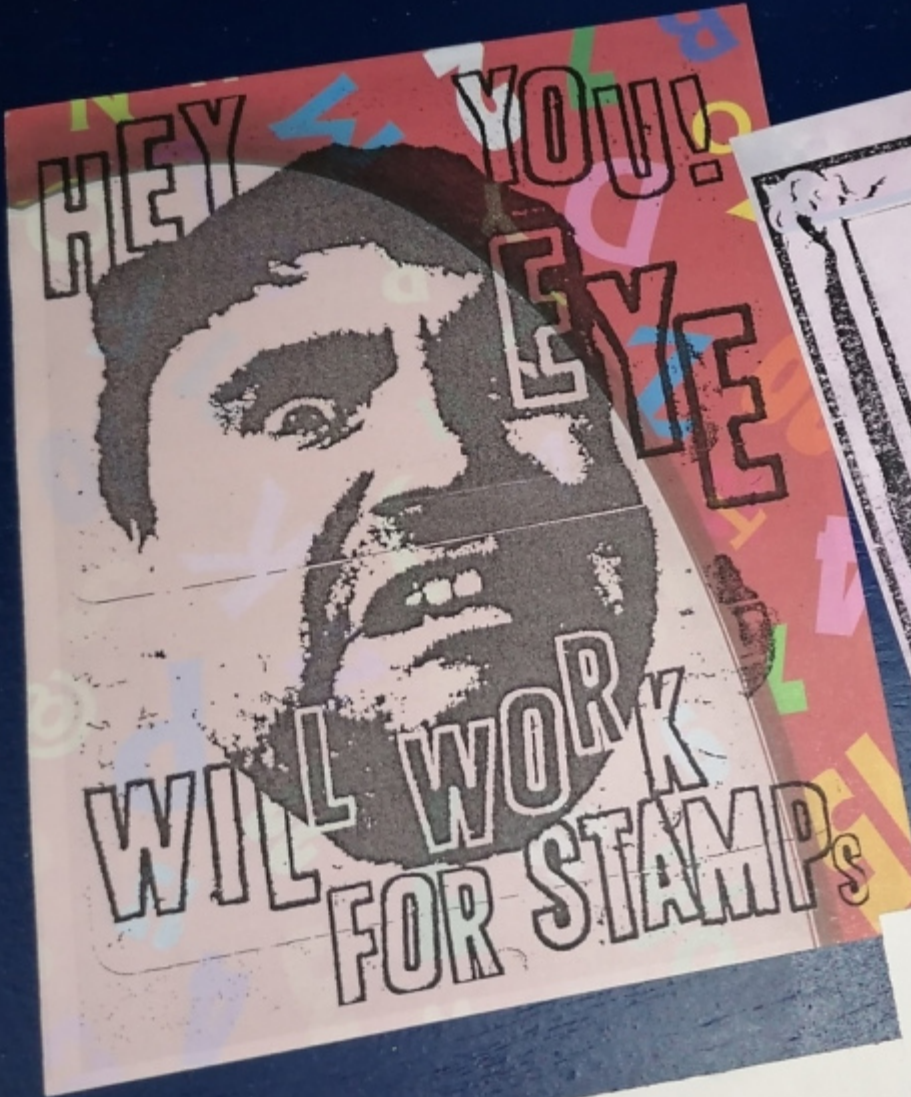


Fig. 113. Finding directions by a shadow at noon

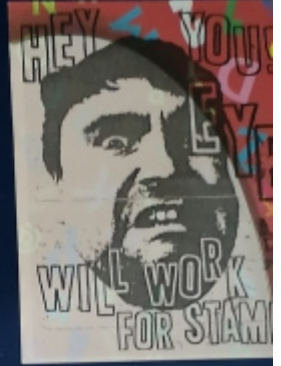


ARDS





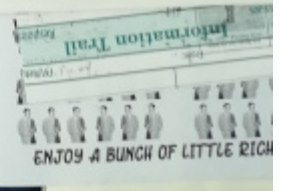
IF YOU CAN, QUIT THE BAND YOU WERE FORCED TO PLAY BASS IN, START A NEW ONE WITH YOU ON GUITAR SO PEOPLE WILL NOTICE YOU.



In Elementary School, I Once Saw a Kid Get Stabbed with a Pencil, I Think.
By Jon Foster / August 2019

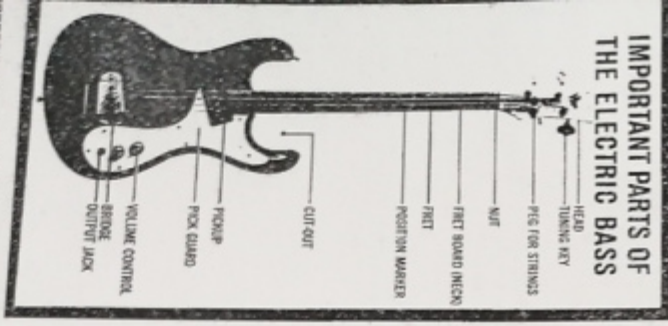


请勿将卫生纸以外东西丢入马桶
請勿將衛生紙以外東西丟入馬桶



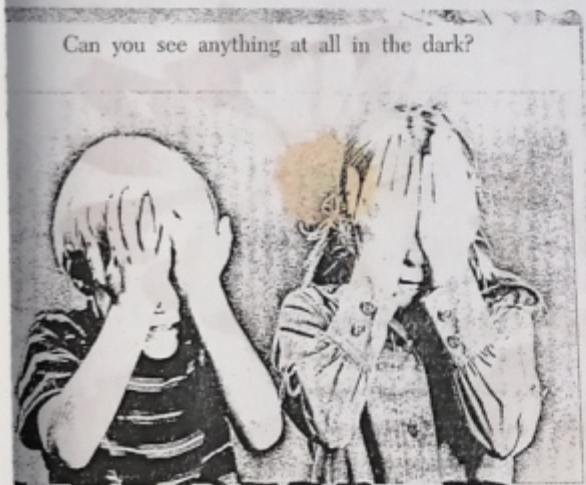


以外的
桶
外的



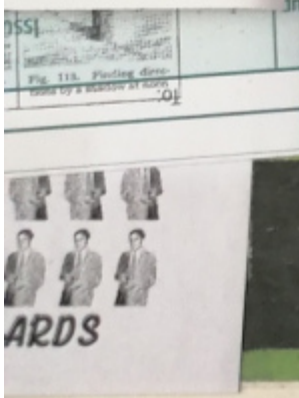
IMPORTANT PARTS OF THE ELECTRIC BASS

NOW THAT YOU'VE BEEN FORCED TO
 PLAY BASS IN YOUR BAND, HERE'S
 WHAT ONE LOOKS LIKE. THEY'RE
 SIMILAR TO A GUITAR BUT NO ONE
 CARES ABOUT BASS PLAYERS.



Can you see anything at all in the dark?

ANSWER:
 NOT WITH
 MY HANDS
 IN FRONT OF MY
 FACE



TH



THANK YOU

For Nothing!

Hello mail-art super buddy!

It's almost 2020, or it might be 2020 based on when I actually get this out to you, If it's 2019 then this will be the last piece of mail-art I send to you this year, if it's 2020, then it'll be the first. No worries, you probably know how number work so that last fact shouldn't be much of a surprise to you. Basically, I got a little drunk and ordered this card for no reason along with this years Christmas cards. It was a good deal...I bought a bunch.

Strangely, I'm a little drunk again writing this letter. I'm sitting at the beach a few cocktails in. Dinner should be coming up soon or I'll need to slow down on the beverages. Tomorrow is Thanksgiving and my plan is to watch football games and wait for dinner to be ready.

I'm really going to step up the mail-art game this year. I don't know what that means, really? I send a lot of shit, too much shit, so "stepping up" doesn't seem likely. Maybe I'll make more tape collages and maybe less spray-paint books. No, scratch the latter, it's a lot of fun to make those. Less add and pass sheets, now that seems like a proper goal. I only make those because I can make them at work during my downtown and now that's all I seem to get. Like most mail-art trends, I'm sure that one will slowly fade away. When are people going to get back to sending bananas? I haven't seen that one in a few years.

Only good mail-art from me in 2020!

I'll still going to print off random pieces of paper like the ones in this letter. Those are too much fun, and if I can put more weight do it. Be like Giles Corey, "more weight!"

Anyway, I hope your 2020 is creative and all of that.

See you in the mail!

-jon-

ME
9-7529
MESSAGE
ABOUT
MAIL
ART



Smell your way
to good health

NG A SONG
OHIM

font

WITH A HAMMER
FREE







MAILART.PT

MAILART.PT

EXPO ARTE CORREIO
COPY / PASTE
CURADORIA EXIBIÇÃO MAILART.PT
exposição internacional de técnicas de impressão e reprodução na arte, cartões
FACE . ESPINHO
10 ABR '21 > 05 JUN '21



EXPO ARTE CORREIO
COPY / PASTE
CURADORIA
EXPOSICÃO DE OBRAS
EXPOSIÇÃO INTERNACIONAL DE TÉCNICAS DE IMPRESSÃO E REPRODUÇÃO NA ARTE, CORREIO
FACE . ESPINHO
16 JUN 21 - 06 JUN 21

LIVE ANIMALS
LIVE

ART

ART DIRECTOR AND CURATOR Monsenhor enVide neFelibata

FEATURED ARTIST Jon Foster

SET DESIGN Monsenhor enVide neFelibata

SET BUILD Hélder Silva, Migvel Tepes, Monsenhor enVide neFelibata

ARTISTIC CONSULTING Migvel Tepes

PRODUCTION YZONK.com

CO-PRODUCTION Teatro e Marionetas de Mandrágora & Escola da Marioneta

EDUCATIONAL SERVICE Serviço Educativo do Museu Municipal de Espinho

PRODUCTION SUPPORT Clara Ribeiro & Filipa Mesquita

SUPPORT Município de Espinho & Museu Municipal de Espinho

FINANCIAL SUPPORT Direção-Geral das Artes & Ministério da Cultura da República Portuguesa

THANKS Armando Bouçon, Berta Pereira, Rita Betânia

+351 938 940 122

www.MailArt.pt

mailart@mailart.pt

<https://www.instagram.com/mailart.pt/>

<http://youtube.com/@mailart>

<https://paypal.me/YZONK>

<https://yzonk.com/>